

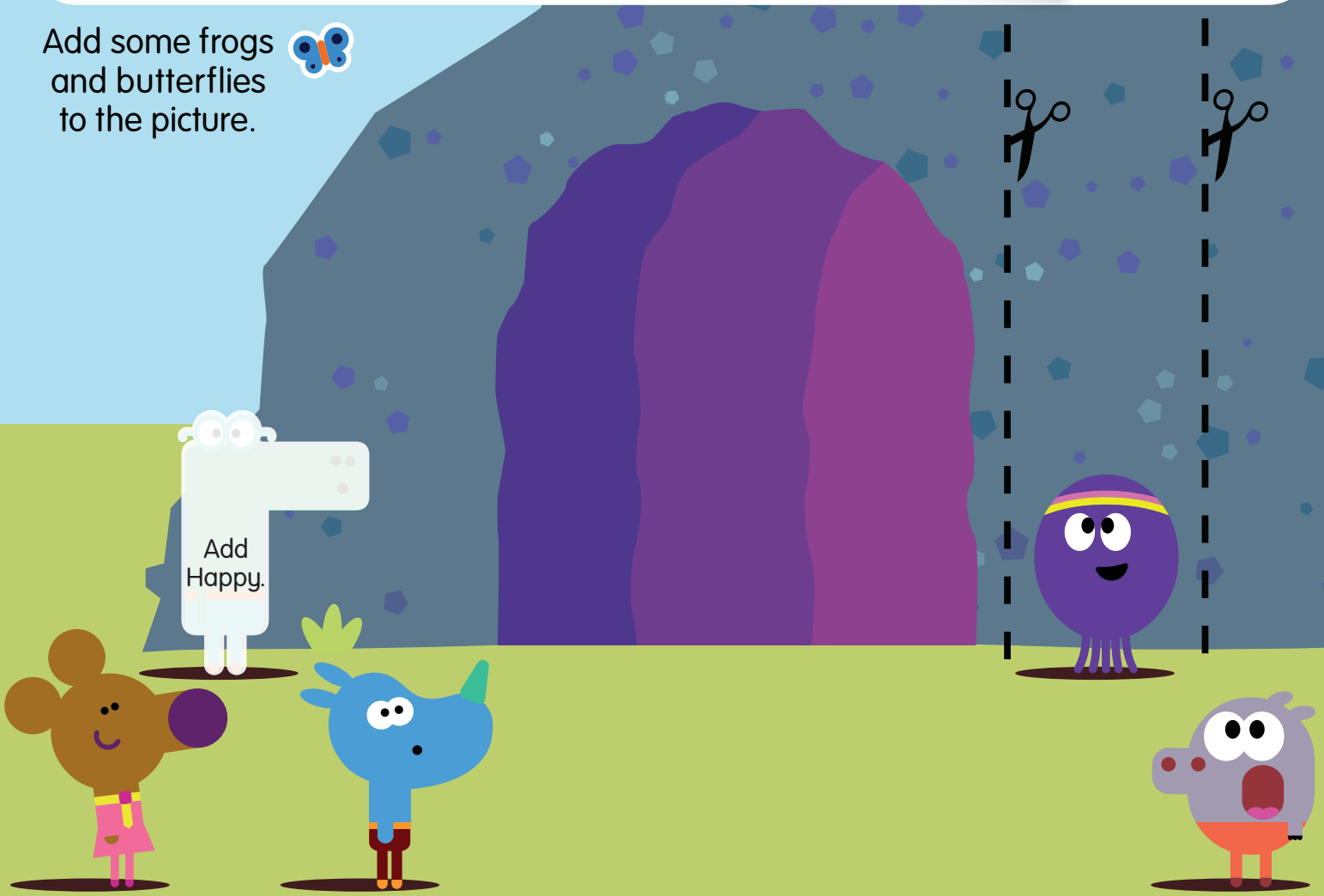
JOIN IN!

It's time to be a part of the story!

Ask an adult helper to cut along the dotted lines. Then push the cut-out stone 'X' from page 34 through the slots and use the tab to slide it backwards and forwards to open and close the secret entrance to the cave.



Add some frogs and butterflies to the picture.



8. Where could it be? Oh! What did you do, Betty? I just leaned on this little rock. Excellent work, Squirrels. You've found a secret entrance. YAY! Let's look inside!

Pop down the letter stickers to finish the sentence.